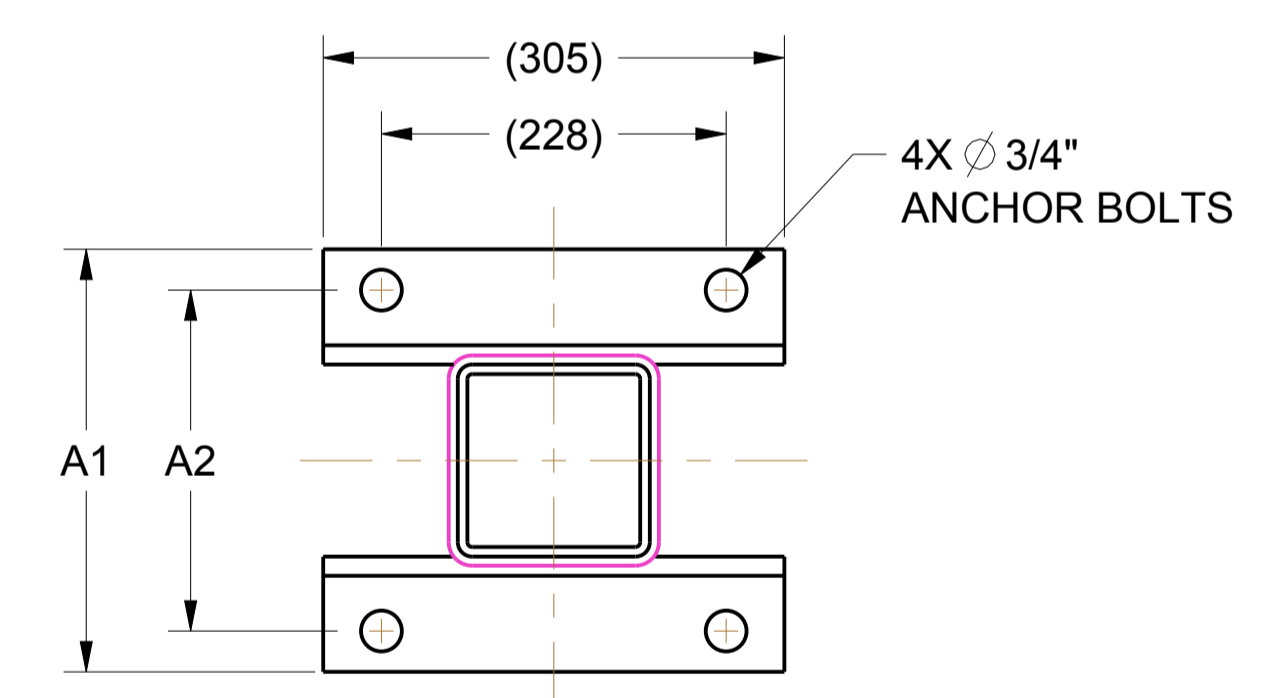
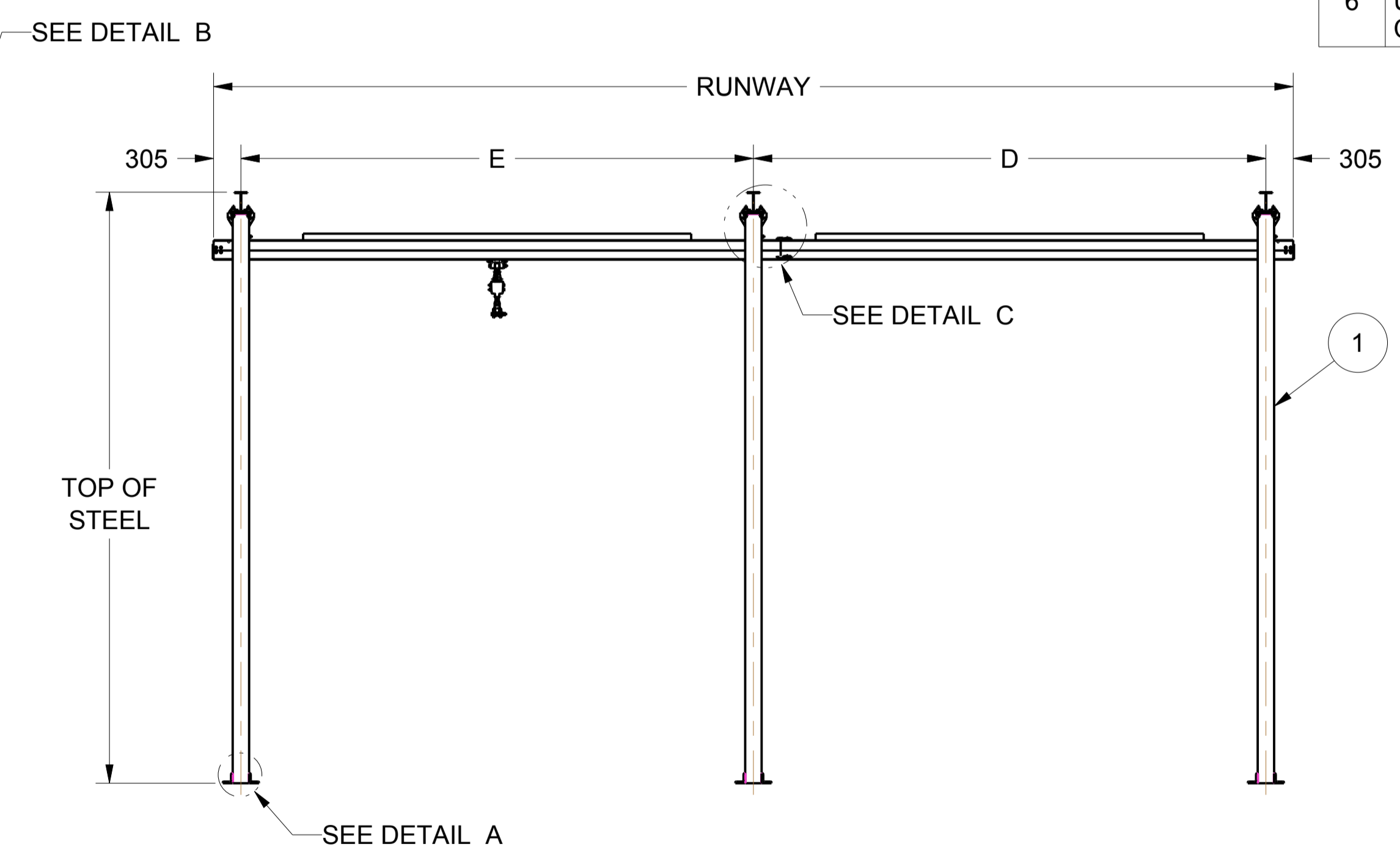
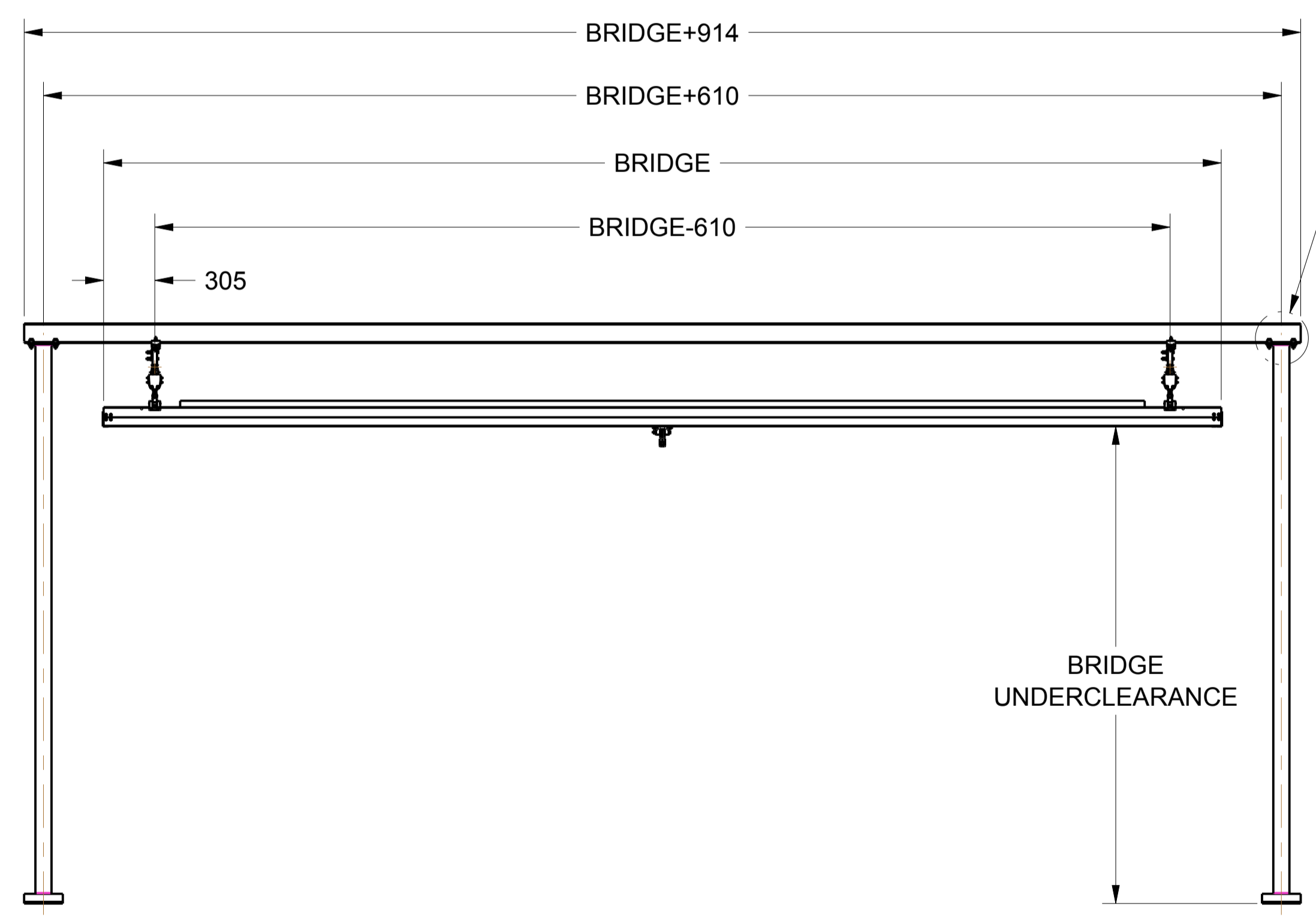
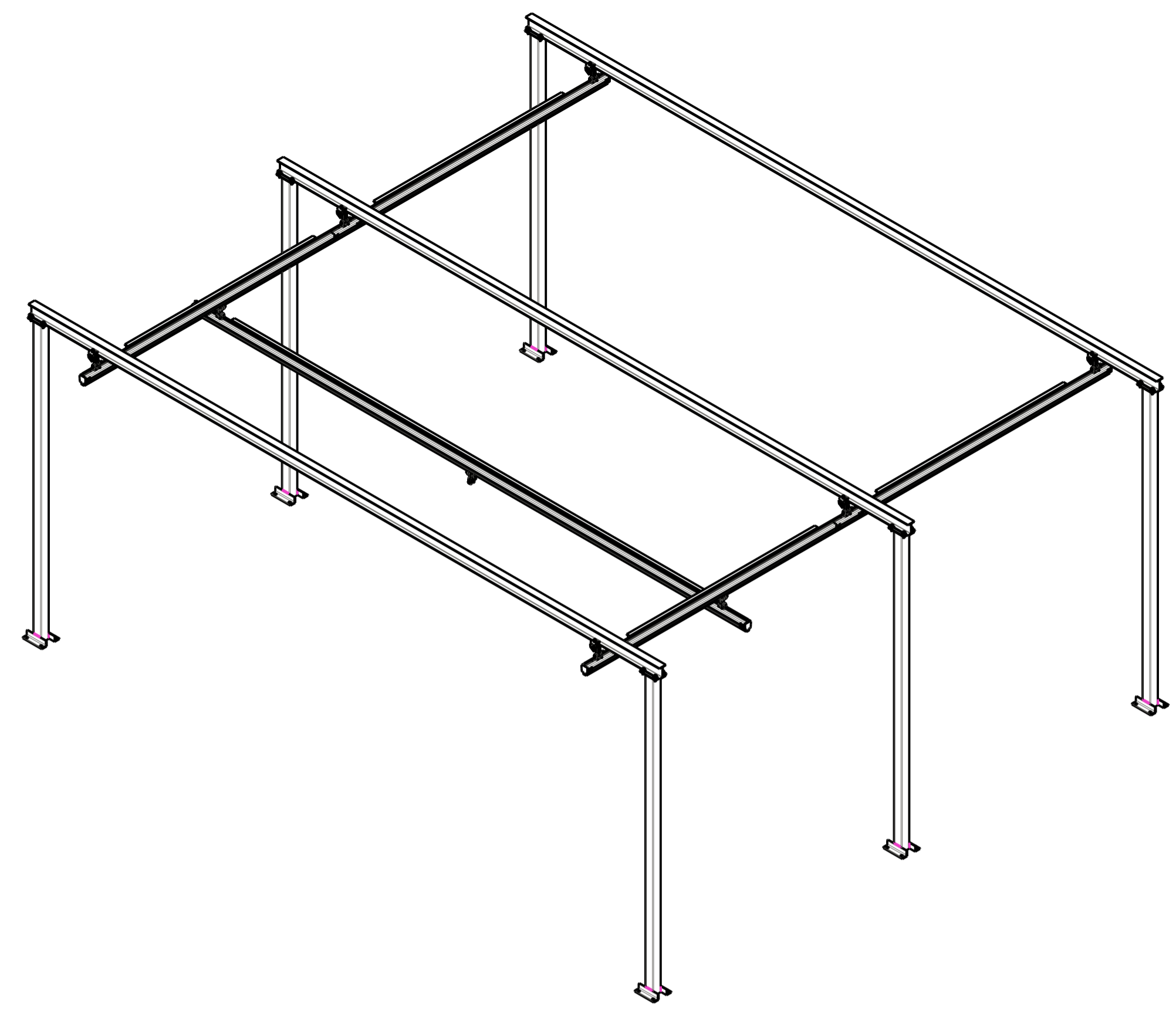
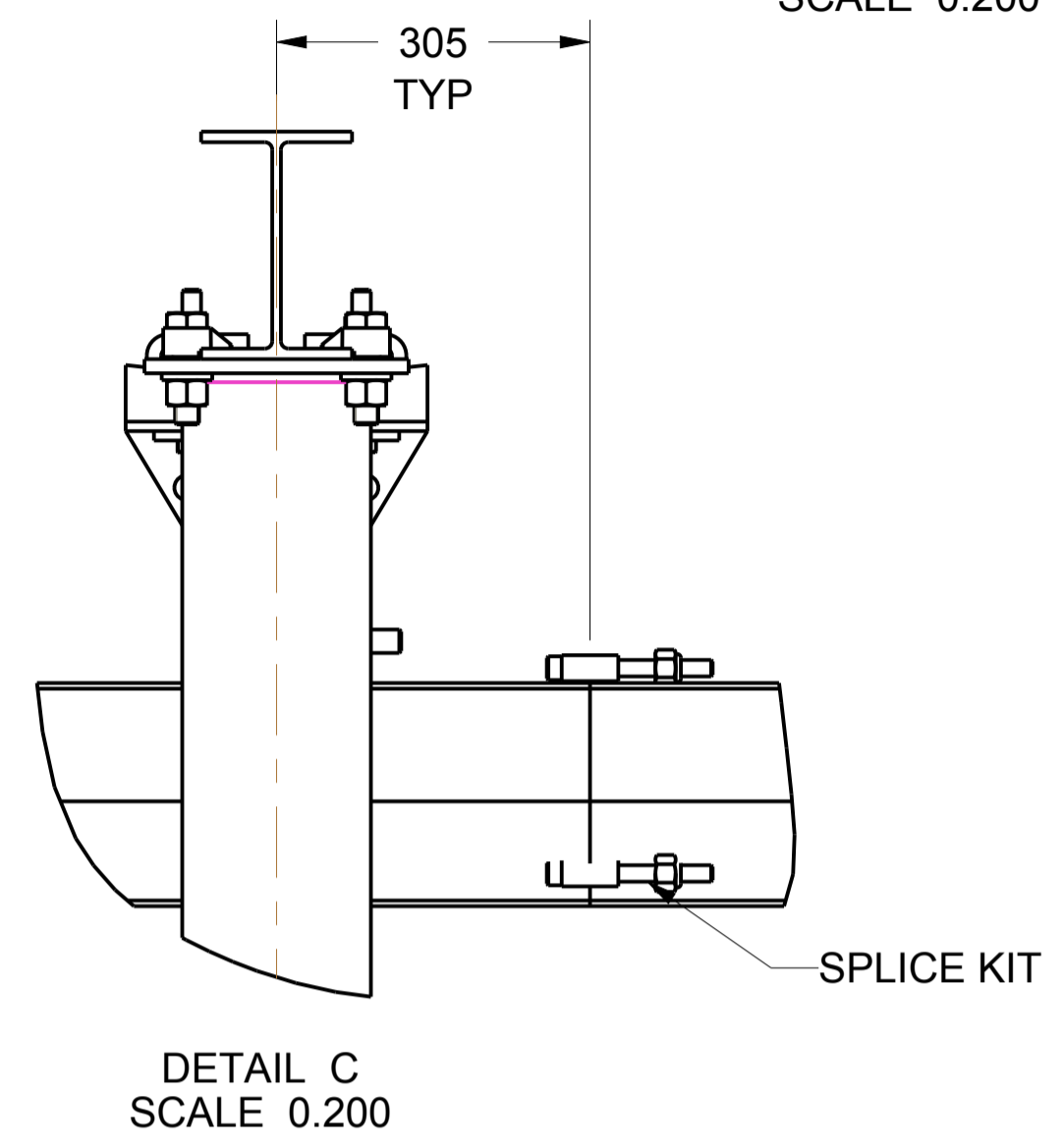
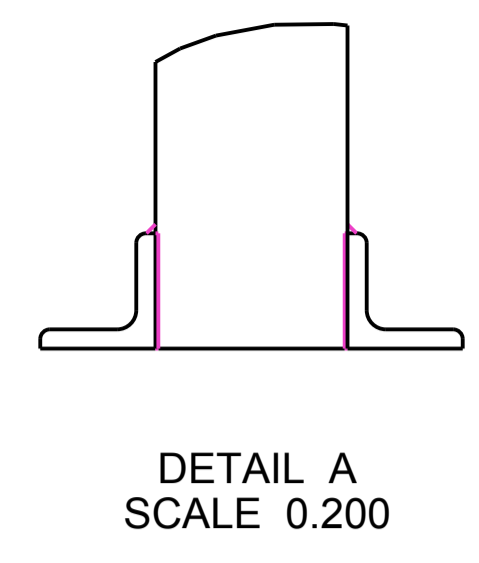
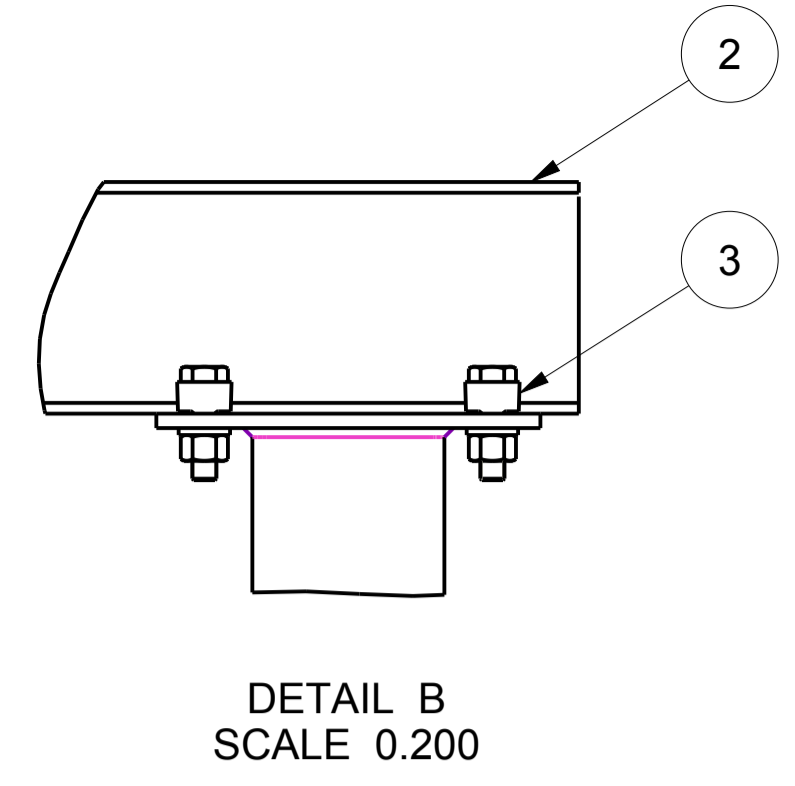


REVISIONS					
ZONE	REV	ECN	DESCRIPTION	DATE	APPD
	A	705005	ORIGINAL RELEASE	02-13-13	M.GUPTA

BILL OF MATERIAL					
PART	ITEM	AMT	DESCRIPTION		
-	1	6	COLUMN WELDMENT		
-	2	3	HEADER BEAM		
*	3	6	COLUMN TO BEAM CONNECTOR KIT		
24308157	4	1	PRODUCT INFORMATION MANUAL- FREE STANDING WORKSTATION CRANES		
71341101	5	1	PRODUCT INFORMATION MANUAL - Z RAIL ALUMINUM AND STEEL OVERHEAD RAIL SYSTEM		
16600470	6	1	MAINTENANCE INFORMATION MANUAL - Z RAIL ALUMINUM AND STEEL OVERHEAD RAIL SYSTEM		
16600462	7	1	PARTS INFORMATION MANUAL - Z RAIL ALUMINUM AND STEEL OVERHEAD RAIL SYSTEM		
16600454	8	1	SAFETY INFORMATION MANUAL - Z RAIL ALUMINUM AND STEEL OVERHEAD RAIL SYSTEM PRODUCT		

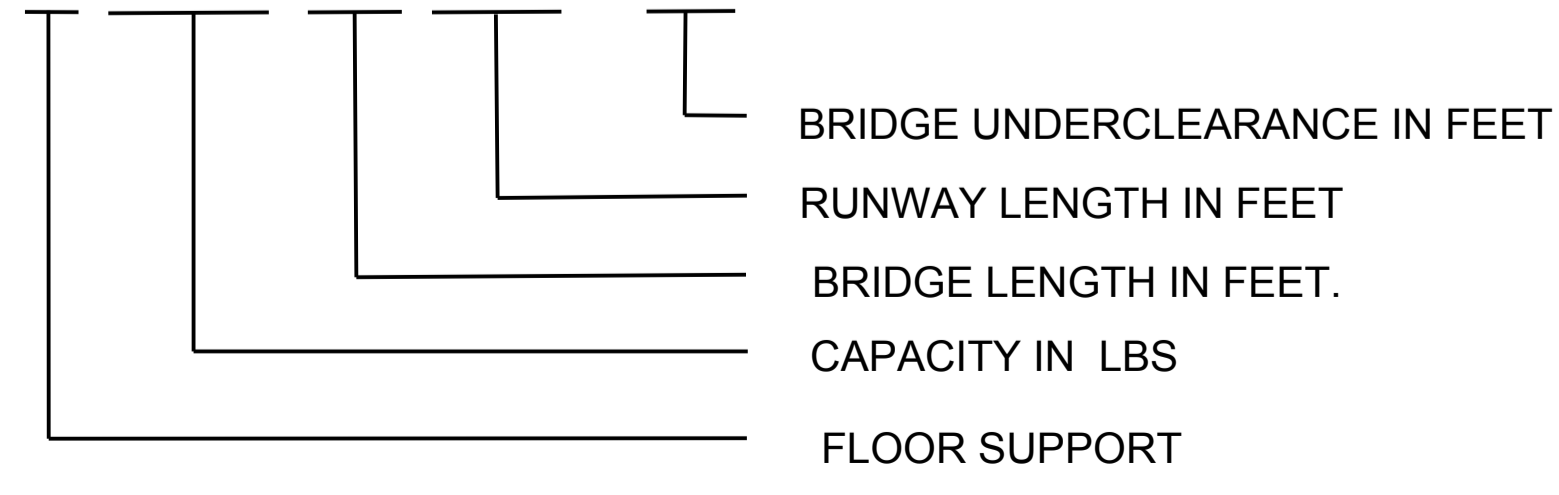
\* DETAIL IS GIVEN IN SHEET 2 & 3.

NOTES	
1	ALL DIMENSIONS ARE IN mm
2	ACTUAL BEAM UNDERCLEARANCE MAY VARY DEPENDING ON RAIL TYPE, HANGERS AND ENDTRUCKS.
3	INGERSOLL RAND ASSUMES NO RESPONSIBILITY FOR THE CONDITIONS OF THE MOUNTING SURFACE. CONSULT A REGISTERED STRUCTURAL ENGINEER BEFORE INSTALLING THE RAIL SYSTEM.
4	ELEVATION DIMENSIONS ARE NOMINAL TAKEN FROM THE BOTTOM OF COLUMN BASEPLATE AND DO NOT ACCOUNT FOR GROUT SHIMS OR ANY OTHER TYPE OF LEVELLING METHOD.
5	FOR TOP STEEL DIMENSION SEE SHEET 2 & 3.
6	USE COLUMN WELDMENT BASE AS A GUIDE TO DRILL HOLES IN CONCRETE FLOOR FOR ANCHORING



BASE PLATE DETAILS		
COLUMN SIZE (Inch))	A1 (mm)	A2 (mm)
3 X 3	229	175
3.5 X 3.5	241	187
4 X 4	254	200
5 X 5	279	225

**FREE STANDING WORKSTATION CRANES**  
**MODEL DRIVER**  
**E 0000 00 000 - 00**



WARNING: THE EXPORT OR REEXPORT OF THIS DRAWING OR A PRODUCT PRODUCED BY THIS DRAWING IS SUBJECT TO U.S. EXPORT ADMINISTRATION REGULATIONS AND OTHER APPLICABLE GOVERNMENT RESTRICTIONS OR REGULATIONS.

**PROPRIETARY NOTICE**

THIS DRAWING CONTAINS CONFIDENTIAL AND TRADE SECRET INFORMATION, IS THE PROPERTY OF INGERSOLL-RAND CO., AND IS GIVEN TO THE RECEIVER IN CONFIDENCE. THE RECEIVER BY RECEIPT AND RETENTION OF THE DRAWING ACCEPTS THE DRAWING IN CONFIDENCE AND AGREES THAT, EXCEPT AS AUTHORIZED IN WRITING BY INGERSOLL-RAND CO. IT WILL (1) NOT USE THE DRAWING OR ANY COPY THEREOF OR THE CONFIDENTIAL OR TRADE SECRET INFORMATION THEREIN; (2) NOT COPY THE DRAWING; (3) NOT DISCLOSE TO OTHERS EITHER THE DRAWING OR THE CONFIDENTIAL OR TRADE SECRET INFORMATION THEREIN; AND (4) UPON COMPLETION OF THE NEED TO RETAIN THE DRAWING, OR UPON DEMAND, RETURN THE DRAWING, ALL COPIES THEREOF, AND ALL MATERIAL COPIED THEREFROM.

DO NOT SCALE DRAWING  
 DRAWING CONFORMS TO ASME Y14.5M - 1994

CAD GENERATED DRAWING,  
 NO MANUAL REVISIONS ALLOWED

UNLESS OTHERWISE SPECIFIED:  
 - REMOVE ALL BURRS AND SHARP CORNERS  
 - WELD SYMBOLS TO BE IN ACCORDANCE WITH ANSI/AWS A2.4

COPYRIGHT © 2013  
 Ingersoll Rand  
 ALL RIGHTS RESERVED

THIRD ANGLE PROJECTION	
DRAWN	DATE
M.GUPTA	02-13-13
CHECKED	DATE
KDG	02-13-13
APPROVED	DATE
AKB	02-13-13

**CUSTOMER COPY**  
 SEND THIS PRINT WITH FREE STANDING WORKSTATION CRANE TO CUSTOMER

**FREE STANDING WORKSTATION CRANE 6 COLUMN**

SIZE: A1	ESTIMATED WEIGHT (KG UNLESS OTHERWISE SPECIFIED):	DWG NO: 24304339	REV: A
SCALE: 0.03	UNIT: MM	SHEET: 1 OF 3	

CAPACITY - 275 lbs

S No.	Kit No.	TOP OF STEEL mm(Feet)	COLUMN SECTION (Inch)	D mm (Feet)	E mm (Feet)	Column to beam connector kit
1	E027505030-10	3954(12.97)	3 X 3	4572 (15)	3962 (13)	24303950
2	E027505030-12	4563(14.97)	3 X 3	4572 (15)	3962 (13)	24303950
3	E027505030-14	5173(16.97)	3.5 X 3.5	4572 (15)	3962 (13)	24303950
4	E027505040-10	3954(12.97)	3 X 3	6096 (20)	5486 (18)	24303950
5	E027505040-12	4563(14.97)	3 X 3	6096 (20)	5486 (18)	24303950
6	E027505040-14	5173(16.97)	3.5 X 3.5	6096 (20)	5486 (18)	24303950
7	E027508040-10	3954(12.97)	3 X 3	6096 (20)	5486 (18)	24303950
8	E027508040-12	4563(14.97)	3 X 3	6096 (20)	5486 (18)	24303950
9	E027508040-14	5173(16.97)	3.5 X 3.5	6096 (20)	5486 (18)	24303950
10	E027508050-10	3954(12.97)	3 X 3	7620 (25)	7010 (23)	24303950
11	E027508050-12	4563(14.97)	3 X 3	7620 (25)	7010 (23)	24303950
12	E027508050-14	5173(16.97)	3.5 X 3.5	7620 (25)	7010 (23)	24303950
13	E027510040-10	3954(12.97)	3 X 3	6096 (20)	5486 (18)	24303950
14	E027510040-12	4563(14.97)	3 X 3	6096 (20)	5486 (18)	24303950
15	E027510040-14	5173(16.97)	3.5 X 3.5	6096 (20)	5486 (18)	24303950
16	E027510050-10	3954(12.97)	3 X 3	7620 (25)	7010 (23)	24303950
17	E027510050-12	4563(14.97)	3 X 3	7620 (25)	7010 (23)	24303950
18	E027510050-14	5173(16.97)	3.5 X 3.5	7620 (25)	7010 (23)	24303950
19	E027510060-10	3954(12.97)	3 X 3	9144 (30)	8534 (28)	24303950
20	E027510060-12	4563(14.97)	3 X 3	9144 (30)	8534 (28)	24303950
21	E027510060-14	5173(16.97)	3.5 X 3.5	9144 (30)	8534 (28)	24303950
22	E027515040-10	3954(12.97)	3 X 3	6096 (20)	5486 (18)	24303950
23	E027515040-12	4563(14.97)	3 X 3	6096 (20)	5486 (18)	24303950
24	E027515040-14	5173(16.97)	3.5 X 3.5	6096 (20)	5486 (18)	24303950
25	E027515050-10	3954(12.97)	3 X 3	7620 (25)	7010 (23)	24303950
26	E027515050-12	4563(14.97)	3 X 3	7620 (25)	7010 (23)	24303950
27	E027515050-14	5173(16.97)	3.5 X 3.5	7620 (25)	7010 (23)	24303950
28	E027515060-10	3954(12.97)	3 X 3	9144 (30)	8534 (28)	24303950
29	E027515060-12	4563(14.97)	3 X 3	9144 (30)	8534 (28)	24303950
30	E027515060-14	5173(16.97)	3.5 X 3.5	9144 (30)	8534 (28)	24303950
31	E027521040-10	3954(12.97)	3 X 3	6096 (20)	5486 (18)	24303950
32	E027521040-12	4563(14.97)	3 X 3	6096 (20)	5486 (18)	24303950
33	E027521040-14	5173(16.97)	3.5 X 3.5	6096 (20)	5486 (18)	24303950
34	E027521050-10	3954(12.97)	3 X 3	7620 (25)	7010 (23)	24303950
35	E027521050-12	4563(14.97)	3 X 3	7620 (25)	7010 (23)	24303950
36	E027521050-14	5173(16.97)	3.5 X 3.5	7620 (25)	7010 (23)	24303950
37	E027521060-10	3954(12.97)	3 X 3	9144 (30)	8534 (28)	24303950
38	E027521060-12	4563(14.97)	3 X 3	9144 (30)	8534 (28)	24303950
39	E027521060-14	5173(16.97)	3.5 X 3.5	9144 (30)	8534 (28)	24303950
40	E027530040-10	3954(12.97)	3 X 3	6096 (20)	5486 (18)	24303950
41	E027530040-12	4563(14.97)	3 X 3	6096 (20)	5486 (18)	24303950
42	E027530040-14	5173(16.97)	3.5 X 3.5	6096 (20)	5486 (18)	24303950
43	E027530050-10	3954(12.97)	3 X 3	7620 (25)	7010 (23)	24303950
44	E027530050-12	4563(14.97)	3 X 3	7620 (25)	7010 (23)	24303950
45	E027530050-14	5173(16.97)	3.5 X 3.5	7620 (25)	7010 (23)	24303950
46	E027530060-10	3954(12.97)	3 X 3	9144 (30)	8534 (28)	24303950
47	E027530060-12	4563(14.97)	3 X 3	9144 (30)	8534 (28)	24303950
48	E027530060-14	5173(16.97)	3.5 X 3.5	9144 (30)	8534 (28)	24303950


CAPACITY - 550 lbs

S No.	Kit No.	TOP OF STEEL mm(Feet)	COLUMN SECTION (Inch)	D mm (Feet)	E mm (Feet)	Column to beam connector kit
1	E055005020-10	3954(12.97)	3 X 3	3048 (10)	2438 (8)	24303950
2	E055005020-12	4563(14.97)	3 X 3	3048 (10)	2438 (8)	24303950
3	E055005020-14	5173(16.97)	3.5 X 3.5	3048 (10)	2438 (8)	24303950
4	E055005030-10	3954(12.97)	3 X 3	4572 (15)	3962 (13)	24303950
5	E055005030-12	4563(14.97)	3 X 3	4572 (15)	3962 (13)	24303950
6	E055005030-14	5173(16.97)	3.5 X 3.5	4572 (15)	3962 (13)	24303950
7	E055008030-10	3954(12.97)	3 X 3	4572 (15)	3962 (13)	24303950
8	E055008030-12	4563(14.97)	3 X 3	4572 (15)	3962 (13)	24303950
9	E055008030-14	5173(16.97)	3.5 X 3.5	4572 (15)	3962 (13)	24303950
10	E055010030-10	3954(12.97)	3 X 3	4572 (15)	3962 (13)	24303950
11	E055010030-12	4563(14.97)	3 X 3	4572 (15)	3962 (13)	24303950
12	E055010030-14	5173(16.97)	3.5 X 3.5	4572 (15)	3962 (13)	24303950
13	E055008040-10	3954(12.97)	3 X 3	6096 (20)	5486 (18)	24303950
14	E055008040-12	4563(14.97)	3 X 3	6096 (20)	5486 (18)	24303950
15	E055008040-14	5173(16.97)	3.5 X 3.5	6096 (20)	5486 (18)	24303950
16	E055010040-10	3954(12.97)	3 X 3	6096 (20)	5486 (18)	24303950
17	E055010040-12	4563(14.97)	3 X 3	6096 (20)	5486 (18)	24303950
18	E055010040-14	5173(16.97)	3.5 X 3.5	6096 (20)	5486 (18)	24303950
19	E055010050-10	3954(12.97)	3 X 3	7620 (25)	7010 (23)	24303950
20	E055010050-12	4563(14.97)	3 X 3	7620 (25)	7010 (23)	24303950
21	E055010050-14	5173(16.97)	3.5 X 3.5	7620 (25)	7010 (23)	24303950
22	E055015040-10	3954(12.97)	3 X 3	6096 (20)	5486 (18)	24303950
23	E055015040-12	4563(14.97)	3 X 3	6096 (20)	5486 (18)	24303950
24	E055015040-14	5173(16.97)	3.5 X 3.5	6096 (20)	5486 (18)	24303950
25	E055015050-10	3954(12.97)	3 X 3	7620 (25)	7010 (23)	24303950
26	E055015050-12	4563(14.97)	3 X 3	7620 (25)	7010 (23)	24303950
27	E055015050-14	5173(16.97)	3.5 X 3.5	7620 (25)	7010 (23)	24303950
28	E055015060-10	3954(12.97)	3 X 3	9144 (30)	8534 (28)	24303950
29	E055015060-12	4563(14.97)	3 X 3	9144 (30)	8534 (28)	24303950
30	E055015060-14	5173(16.97)	3.5 X 3.5	9144 (30)	8534 (28)	24303950
31	E055021040-10	3954(12.97)	3 X 3	6096 (20)	5486 (18)	24303950
32	E055021040-12	4563(14.97)	3 X 3	6096 (20)	5486 (18)	24303950
33	E055021040-14	5173(16.97)	3.5 X 3.5	6096 (20)	5486 (18)	24303950
34	E055021050-10	3954(12.97)	3 X 3	7620 (25)	7010 (23)	24303950
35	E055021050-12	4563(14.97)	3 X 3	7620 (25)	7010 (23)	24303950
36	E055021050-14	5173(16.97)	3.5 X 3.5	7620 (25)	7010 (23)	24303950
37	E055021060-10	3954(12.97)	3 X 3	9144 (30)	8534 (28)	24303950
38	E055021060-12	4563(14.97)	3 X 3	9144 (30)	8534 (28)	24303950
39	E055021060-14	5173(16.97)	3.5 X 3.5	9144 (30)	8534 (28)	24303950
40	E055030040-10	3954(12.97)	3 X 3	6096 (20)	5486 (18)	47499650001
41	E055030040-12	4563(14.97)	3 X 3	6096 (20)	5486 (18)	47499650001
42	E055030040-14	5173(16.97)	3.5 X 3.5	6096 (20)	5486 (18)	47499650001
43	E055030050-10	3954(12.97)	3 X 3	7620 (25)	7010 (23)	47499650001
44	E055030050-12	4563(14.97)	3 X 3	7620 (25)	7010 (23)	47499650001
45	E055030050-14	5173(16.97)	3.5 X 3.5	7620 (25)	7010 (23)	47499650001
46	E055030060-10	3954(12.97)	3 X 3	9144 (30)	8534 (28)	47499650001
47	E055030060-12	4563(14.97)	3 X 3	9144 (30)	8534 (28)	47499650001
48	E055030060-14	5173(16.97)	3.5 X 3.5	9144 (30)	8534 (28)	47499650001

PROPRIETARY NOTICE  
 THIS DRAWING CONTAINS CONFIDENTIAL AND TRADE SECRET INFORMATION IS THE PROPERTY OF INGERSOLL RAND CO. AND IS GIVEN TO THE RECEIVER IN CONFIDENCE. THE RECEIVER BY ACCEPTANCE AND RETENTION OF THE DRAWING ACCEPTS THE DRAWING IN CONFIDENCE AND AGREES THAT EXCEPT AS AUTHORIZED IN WRITING BY INGERSOLL RAND CO. IT WILL (1) NOT USE THE DRAWING OR ANY COPY THEREOF OR THE CONFIDENTIAL OR TRADE SECRET INFORMATION THEREIN; (2) NOT COPY THE DRAWING; (3) NOT DISCLOSE TO OTHERS EITHER THE DRAWING OR THE CONFIDENTIAL OR TRADE SECRET INFORMATION THEREIN; AND (4) UPON COMPLETION OF THE NEED TO RETAIN THE DRAWING OR UPON DEMAND, RETURN THE DRAWING, ALL COPIES THEREOF, AND ALL MATERIAL COPIED THEREFROM.

TITLE  
**FREE STANDING WORKSTATION  
 CRANE 6 COLUMN**

SIZE: **A1** DWG NO: **24304339** REV: **A**  
 SCALE: 0.04 SHEET: 2 OF 3



CAPACITY - 1100 lbs

S No.	Kit No.	TOP OF STEEL mm(Feet)	COLUMN SECTION (Inch)	D mm (Feet)	E mm (Feet)	Column to beam connector kit
1	E110005020-10	3954(12.97)	4 x 4	3048 (10)	2438 (8)	24303950
2	E110005020-12	4563(14.97)	4 x 4	3048 (10)	2438 (8)	24303950
3	E110005020-14	5173(16.97)	5 x 5	3048 (10)	2438 (8)	24303950
4	E110005030-10	3954(12.97)	4 x 4	4572 (15)	3962 (13)	24303950
5	E110005030-12	4563(14.97)	4 x 4	4572 (15)	3962 (13)	24303950
6	E110005030-14	5173(16.97)	5 x 5	4572 (15)	3962 (13)	24303950
7	E110008030-10	3954(12.97)	4 x 4	4572 (15)	3962 (13)	24303950
8	E110008030-12	4563(14.97)	4 x 4	4572 (15)	3962 (13)	24303950
9	E110008030-14	5173(16.97)	5 x 5	4572 (15)	3962 (13)	24303950
10	E110010030-10	3954(12.97)	4 x 4	4572 (15)	3962 (13)	24303950
11	E110010030-12	4563(14.97)	4 x 4	4572 (15)	3962 (13)	24303950
12	E110010030-14	5173(16.97)	5 x 5	4572 (15)	3962 (13)	24303950
13	E110015030-10	3954(12.97)	4 x 4	4572 (15)	3962 (13)	24303950
14	E110015030-12	4563(14.97)	4 x 4	4572 (15)	3962 (13)	24303950
15	E110015030-14	5173(16.97)	5 x 5	4572 (15)	3962 (13)	24303950
16	E110021030-10	3954(12.97)	4 x 4	4572 (15)	3962 (13)	24303950
17	E110021030-12	4563(14.97)	4 x 4	4572 (15)	3962 (13)	24303950
18	E110021030-14	5173(16.97)	5 x 5	4572 (15)	3962 (13)	24303950
19	E110030010-10	3954(12.97)	4 x 4	1524 (5)	914 (3)	24303950
20	E110030010-12	4563(14.97)	4 x 4	1524 (5)	914 (3)	24303950
21	E110030010-14	5173(16.97)	5 x 5	1524 (5)	914 (3)	24303950
22	E110030015-10	3954(12.97)	4 x 4	2438 (8)	1829 (6)	24303950
23	E110030015-12	4563(14.97)	4 x 4	2438 (8)	1829 (6)	24303950
24	E110030015-14	5173(16.97)	5 x 5	2438 (8)	1829 (6)	24303950
25	E110030020-10	3954(12.97)	4 x 4	3048 (10)	2438 (8)	24303950
26	E110030020-12	4563(14.97)	4 x 4	3048 (10)	2438 (8)	24303950
27	E110030020-14	5173(16.97)	5 x 5	3048 (10)	2438 (8)	24303950
28	E110008040-10	3954(12.97)	4 x 4	6096 (20)	5486 (18)	24303950
29	E110008040-12	4563(14.97)	4 x 4	6096 (20)	5486 (18)	24303950
30	E110008040-14	5173(16.97)	5 x 5	6096 (20)	5486 (18)	24303950
31	E110010040-10	3954(12.97)	4 x 4	6096 (20)	5486 (18)	24303950
32	E110010040-12	4563(14.97)	4 x 4	6096 (20)	5486 (18)	24303950
33	E110010040-14	5173(16.97)	5 x 5	6096 (20)	5486 (18)	24303950
34	E110015040-10	3954(12.97)	4 x 4	6096 (20)	5486 (18)	24303950
35	E110015040-12	4563(14.97)	4 x 4	6096 (20)	5486 (18)	24303950
36	E110015040-14	5173(16.97)	5 x 5	6096 (20)	5486 (18)	24303950
37	E110021040-10	3954(12.97)	4 x 4	6096 (20)	5486 (18)	24303950
38	E110021040-12	4563(14.97)	4 x 4	6096 (20)	5486 (18)	24303950
39	E110021040-14	5173(16.97)	5 x 5	6096 (20)	5486 (18)	24303950

CAPACITY - 2000 lbs

S No.	Kit No.	TOP OF STEEL mm(Feet)	COLUMN SECTION (Inch)	D mm (Feet)	E mm (Feet)	Column to beam connector kit
1	E200005015-10	3954(12.97)	2286 (7.5)	2438 (8)	1829 (6)	24303950
2	E200005015-12	4563(14.97)	2286 (7.5)	2438 (8)	1829 (6)	24303950
3	E200005015-14	5173(16.97)	2286 (7.5)	2438 (8)	1829 (6)	24303950
4	E200005020-10	3954(12.97)	3048 (10)	3048 (10)	2438 (8)	24303950
5	E200005020-12	4563(14.97)	3048 (10)	3048 (10)	2438 (8)	24303950
6	E200005020-14	5173(16.97)	3048 (10)	3048 (10)	2438 (8)	24303950
7	E200008020-10	3954(12.97)	3048 (10)	3048 (10)	2438 (8)	24303950
8	E200008020-12	4563(14.97)	3048 (10)	3048 (10)	2438 (8)	24303950
9	E200008020-14	5173(16.97)	3048 (10)	3048 (10)	2438 (8)	24303950
10	E200008030-10	3954(12.97)	4572 (15)	4572 (15)	3962 (13)	24303950
11	E200008030-12	4563(14.97)	4572 (15)	4572 (15)	3962 (13)	24303950
12	E200008030-14	5173(16.97)	4572 (15)	4572 (15)	3962 (13)	24303950
13	E200010020-10	3954(12.97)	3048 (10)	3048 (10)	2438 (8)	24303950
14	E200010020-12	4563(14.97)	3048 (10)	3048 (10)	2438 (8)	24303950
15	E200010020-14	5173(16.97)	3048 (10)	3048 (10)	2438 (8)	24303950
16	E200010030-10	3954(12.97)	4572 (15)	4572 (15)	3962 (13)	24303950
17	E200010030-12	4563(14.97)	4572 (15)	4572 (15)	3962 (13)	24303950
18	E200010030-14	5173(16.97)	4572 (15)	4572 (15)	3962 (13)	24303950
19	E200015020-10	3954(12.97)	3048 (10)	3048 (10)	2438 (8)	24303950
20	E200015020-12	4563(14.97)	3048 (10)	3048 (10)	2438 (8)	24303950
21	E200015020-14	5173(16.97)	3048 (10)	3048 (10)	2438 (8)	24303950
22	E200015030-10	3954(12.97)	4572 (15)	4572 (15)	3962 (13)	24303950
23	E200015030-12	4563(14.97)	4572 (15)	4572 (15)	3962 (13)	24303950
24	E200015030-14	5173(16.97)	4572 (15)	4572 (15)	3962 (13)	24303950
25	E200021015-10	3954(12.97)	2286 (7.5)	2438 (8)	1829 (6)	47499650001
26	E200021015-12	4563(14.97)	2286 (7.5)	2438 (8)	1829 (6)	47499650001
27	E200021015-14	5173(16.97)	2286 (7.5)	2438 (8)	1829 (6)	47499650001
28	E200021020-10	3954(12.97)	3048 (10)	3048 (10)	2438 (8)	47499650001
29	E200021020-12	4563(14.97)	3048 (10)	3048 (10)	2438 (8)	47499650001
30	E200021020-14	5173(16.97)	3048 (10)	3048 (10)	2438 (8)	47499650001

PROPRIETARY NOTICE

THIS DRAWING CONTAINS CONFIDENTIAL AND TRADE SECRET INFORMATION IS THE PROPERTY OF INGERSOLL RAND CO. AND IS GIVEN TO THE RECEIVER IN CONFIDENCE. THE RECEIVER BY ACCEPTANCE AND RETENTION OF THE DRAWING ACCEPTS THE DRAWING IN CONFIDENCE AND AGREES THAT EXCEPT AS AUTHORIZED IN WRITING BY INGERSOLL RAND CO. IT WILL (1) NOT USE THE DRAWING OR ANY COPY THEREOF OR THE CONFIDENTIAL OR TRADE SECRET INFORMATION THEREIN; (2) NOT COPY THE DRAWING; (3) NOT DISCLOSE TO OTHERS EITHER THE DRAWING OR THE CONFIDENTIAL OR TRADE SECRET INFORMATION THEREIN; AND (4) UPON COMPLETION OF THE NEED TO RETAIN THE DRAWING OR UPON DEMAND, RETURN THE DRAWING, ALL COPIES THEREOF, AND ALL MATERIAL COPIED THEREFROM.

TITLE: FREE STANDING WORKSTATION CRANE 6 COLUMN

SIZE: A1

DWG NO: 24304339

SCALE: 0.03

SHEET: 3 OF 3

